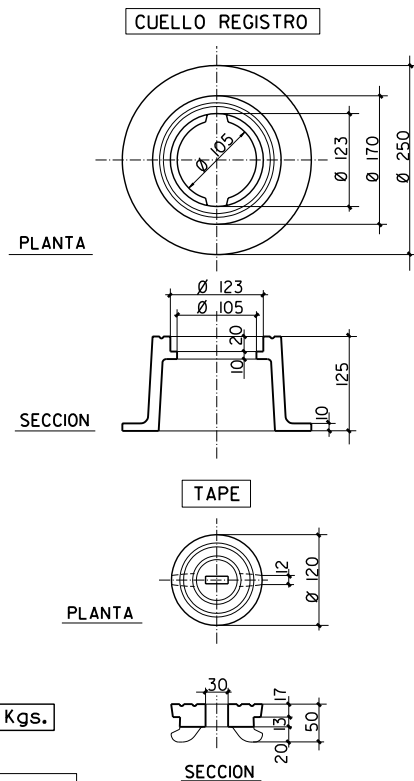


TRAMPILLON

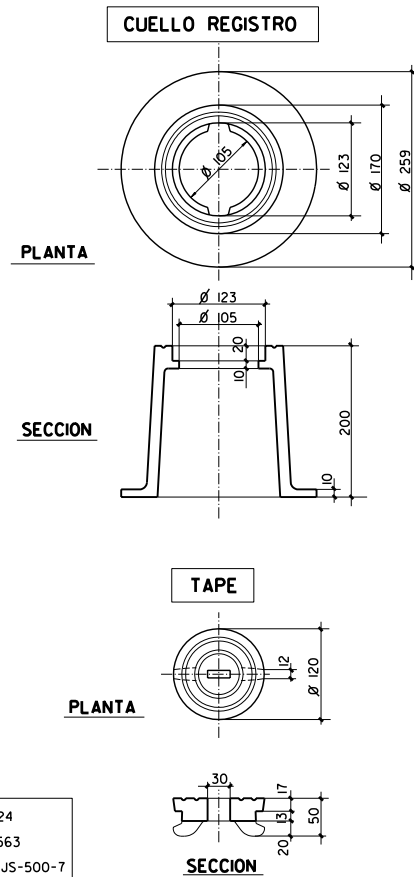


PESO ≥ 11Kgs.

NORMA — EN-124
CALIDAD — EN-1563
MATERIAL — EN-GJS-500-7

COTAS EN mm.

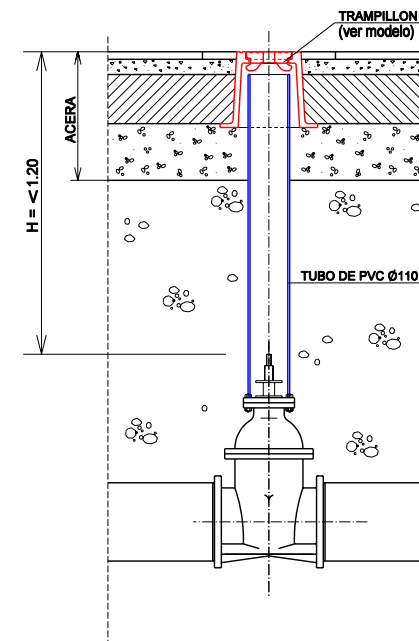
TRAMPILLON



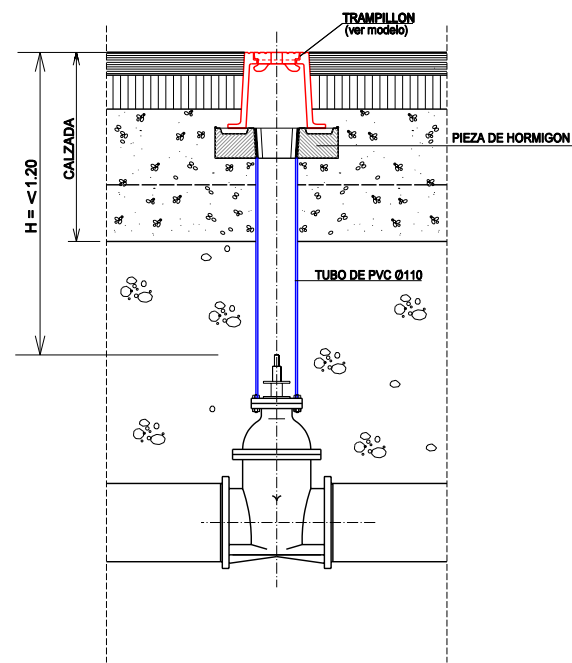
NORMA — EN-124
CALIDAD — EN-1563
MATERIAL — EN-GJS-500-7

COTAS EN mm.

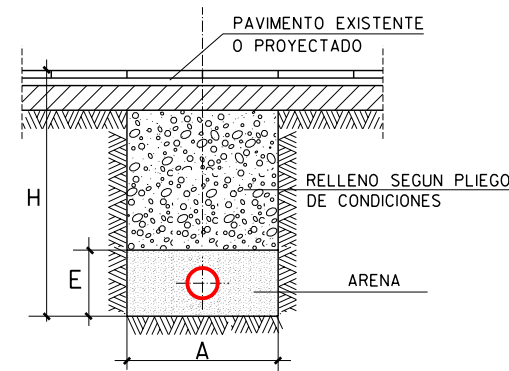
TRAMPILLON EN ACERAS CON H=<1.20m.



TRAMPILLON EN CALZADA CON H=<1.20m.



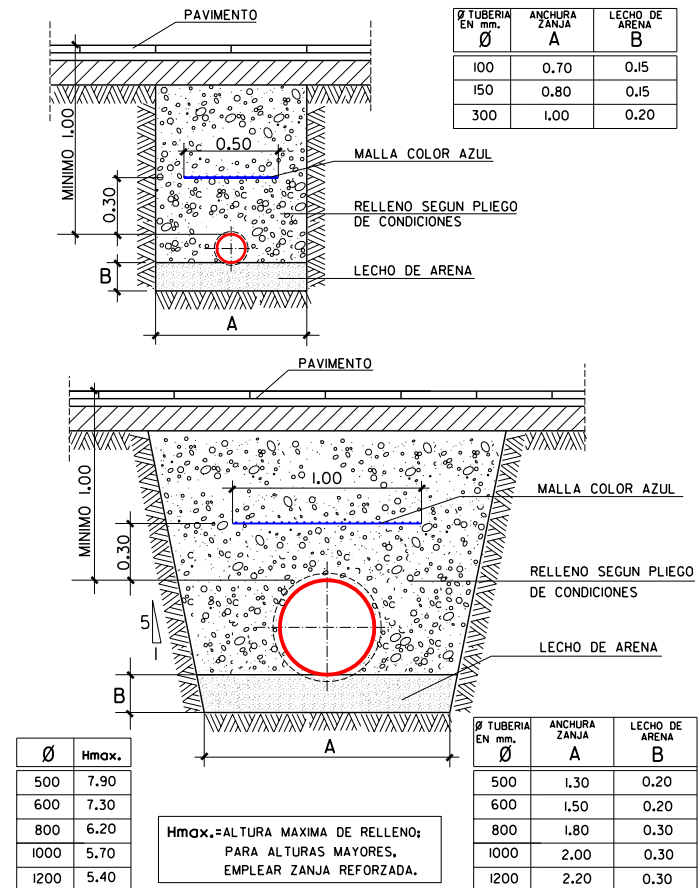
ZANJA PARA TUBERIA DE AGUA (PE o PVC)



CUADRO DE MEDIDAS

Ø (mm).	A	H	E
20	0.30	0.60	0.15
25	0.30	0.60	0.15
32	0.30	0.70	0.20
50	0.30	0.80	0.20
63	0.40	0.90	0.25
75	0.50	1.00	0.25
90	0.60	1.10	0.30
110	0.70	1.20	0.30
125	0.70	1.25	0.35
160	0.80	1.30	0.35
200	0.90	1.35	0.40

ZANJA PARA TUBERIA DE AGUA



Hmax.=ALTURA MAXIMA DE RELLENO;
PARA ALTURAS MAYORES,
EMPLEAR ZANJA REFORZADA.